

Horizontal toggle clamps have the advantage of having a low profile when the handle is in the closed position, and so are most suitable for applications having a height restriction. The arm and handle geometry use opposite axis directions.

**Features include:**

- Red vinyl hand grip with cushioned rib profile for improved user comfort.
- All body and linkage components are zinc plated to resist corrosion.
- Pivot points are fitted with hardened steel or stainless steel rivets to provide a long service life.
- Clamps with adjustable spindles are manufactured with a formed end to the arm, which captivates the spindle should it become loose during operation.
- The handle and arm linkages are designed to provide a smooth continuous action when the handle is opened and closed.

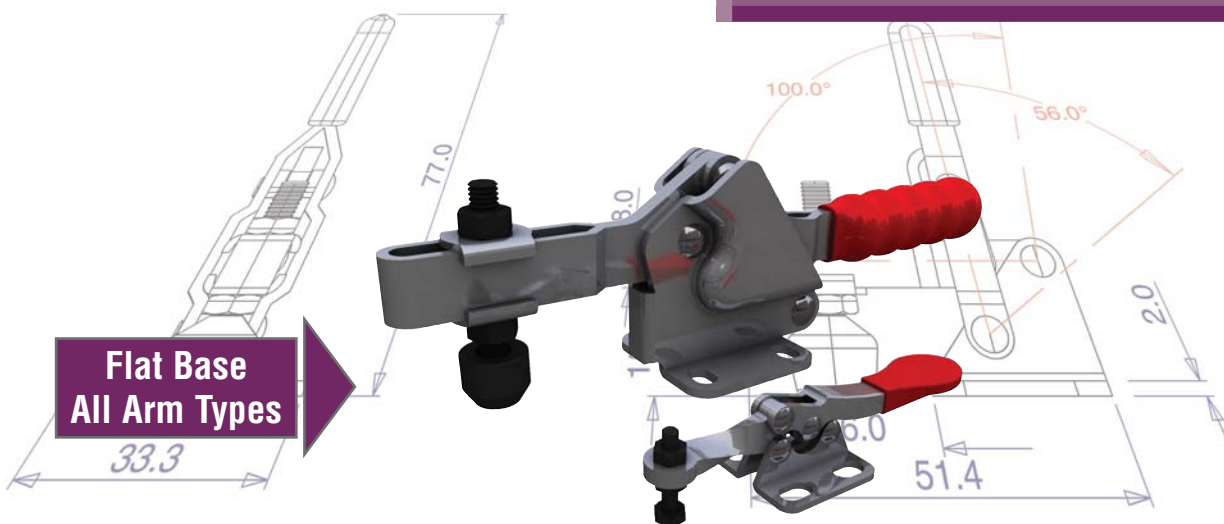
**Side Mounting  
All Arm Types**



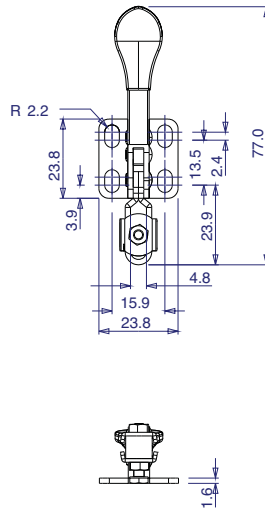
**Straight Base  
All Arm Types**



**Flat Base  
All Arm Types**

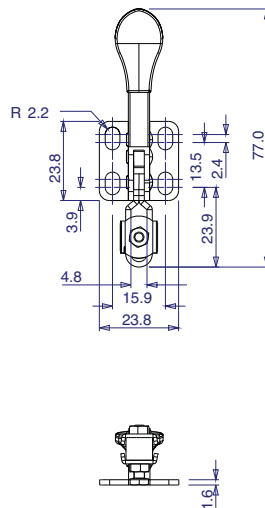


## ► Flat Base All Arm Types

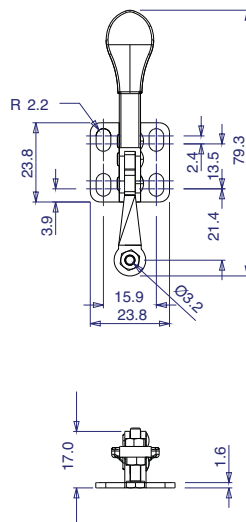
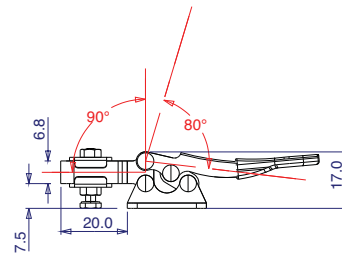


<b>Part No:</b>	<b>GH-201</b>
Holding Force:	38Kg
Arm Opens:	90°
Handle Opens:	80°
Weight:	0.043Kg
Spindle Supplied:	SA-08034
Flanged Washers Supplied:	FW-080

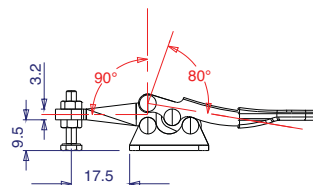
stainless



<b>Part No:</b>	<b>GH-201-SS</b>
Holding Force:	38Kg
Arm Opens:	90°
Handle Opens:	80°
Weight:	0.043Kg
Spindle Supplied:	SA-08034-SS
Flanged Washers Supplied:	FW-080-SS

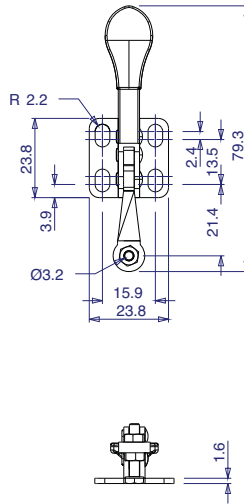


<b>Part No:</b>	<b>GH-201-A</b>
Holding Force:	38Kg
Arm Opens:	90°
Handle Opens:	80°
Weight:	0.05Kg
Spindle Supplied:	SA-08034
Flanged Washers Supplied:	-

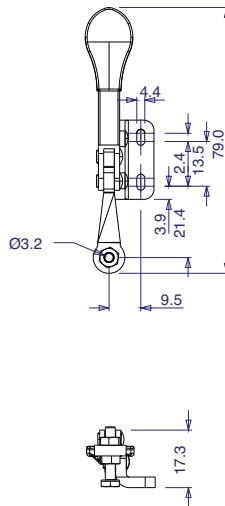
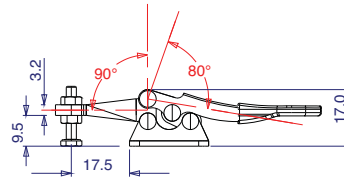


► Flat Base All Arm Types

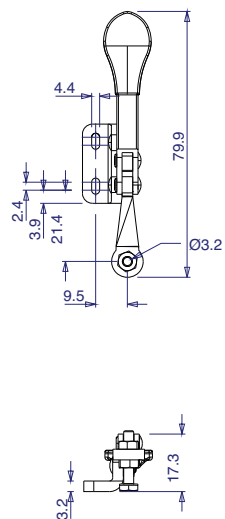
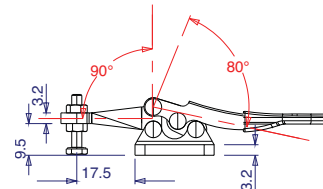
stainless



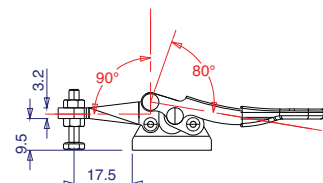
<b>Part No:</b>	<b>GH-201-ASS</b>
Holding Force:	38Kg
Arm Opens:	90°
Handle Opens:	80°
Weight:	0.05Kg
Spindle Supplied:	SA-08034-SS
Flanged Washers Supplied:	-



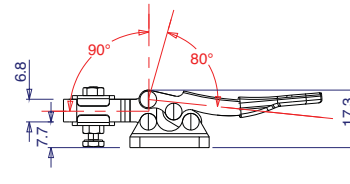
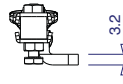
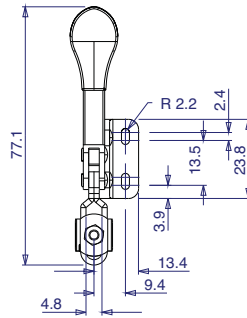
<b>Part No:</b>	<b>GH-201-AL</b>
Holding Force:	38Kg
Arm Opens:	90°
Handle Opens:	80°
Weight:	0.05Kg
Spindle Supplied:	SA-08034
Flanged Washers Supplied:	-



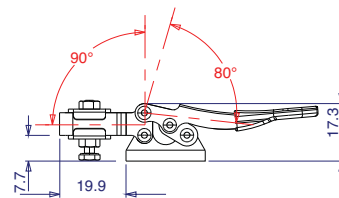
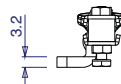
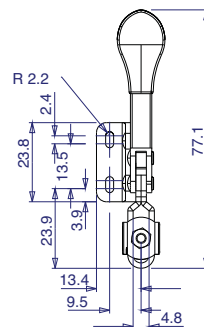
<b>Part No:</b>	<b>GH-201-AR</b>
Holding Force:	38Kg
Arm Opens:	90°
Handle Opens:	80°
Weight:	0.05Kg
Spindle Supplied:	SA-08034
Flanged Washers Supplied:	-



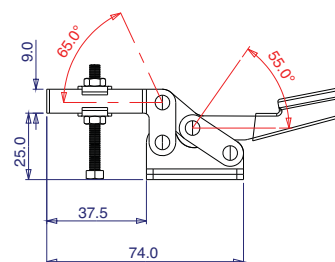
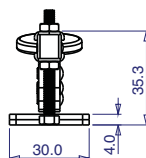
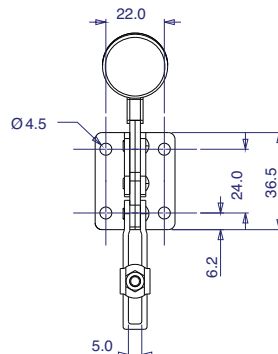
## ► Flat Base All Arm Types



<b>Part No:</b>	<b>GH-201-L</b>
Holding Force:	38Kg
Arm Opens:	90°
Handle Opens:	80°
Weight:	0.05Kg
Spindle Supplied:	SA-08034
Flanged Washers Supplied:	FW-080

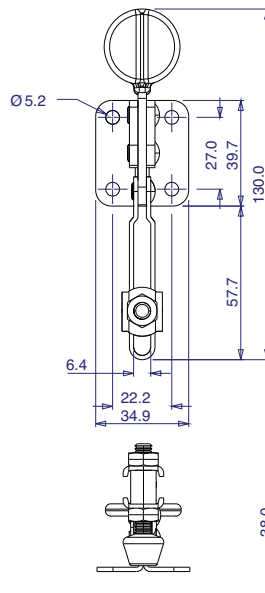


<b>Part No:</b>	<b>GH-201-R</b>
Holding Force:	38Kg
Arm Opens:	90°
Handle Opens:	80°
Weight:	0.05Kg
Spindle Supplied:	SA-08034
Flanged Washers Supplied:	FW-080

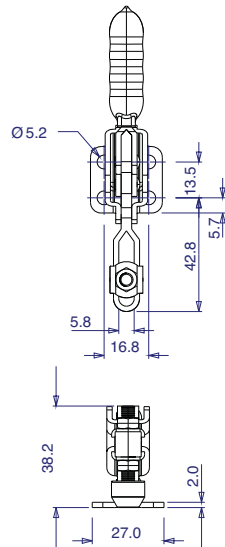
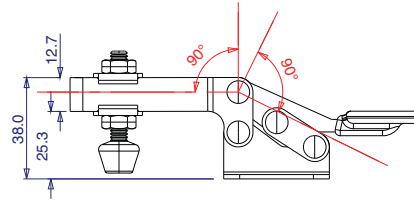


<b>Part No:</b>	<b>GH-20300</b>
Holding Force:	30Kg
Arm Opens:	65°
Handle Opens:	55°
Weight:	0.1Kg
Spindle Supplied:	SA-044007
Flanged Washers Supplied:	FW-080

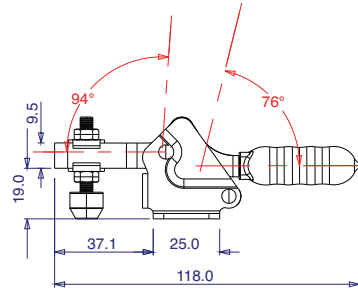
► Flat Base All Arm Types



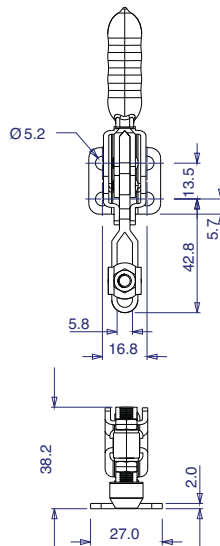
<b>Part No:</b>	<b>GH-22100</b>
Holding Force:	68Kg
Arm Opens:	90°
Handle Opens:	90°
Weight:	0.11Kg
Spindle Supplied:	FC-14134
Flanged Washers Supplied:	FW-141



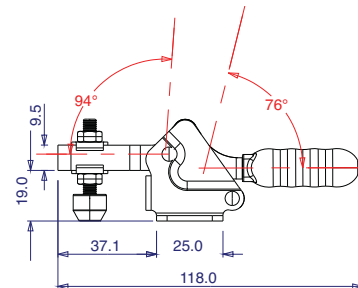
<b>Part No:</b>	<b>GH-20752-B</b>
Holding Force:	65Kg
Arm Opens:	94°
Handle Opens:	76°
Weight:	0.10Kg
Spindle Supplied:	SA-054008-BK+NC-05 Cap
Flanged Washers Supplied:	FW-100



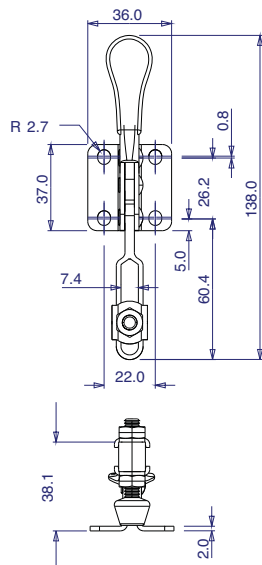
stainless



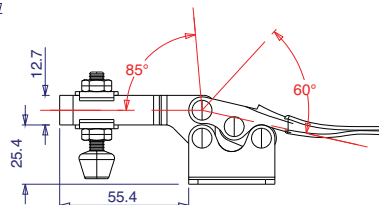
<b>Part No:</b>	<b>GH-20752-BSS</b>
Holding Force:	65Kg
Arm Opens:	94°
Handle Opens:	76°
Weight:	0.10Kg
Spindle Supplied:	SA-054008-SS+NC-05 Cap
Flanged Washers Supplied:	FW-100-SS



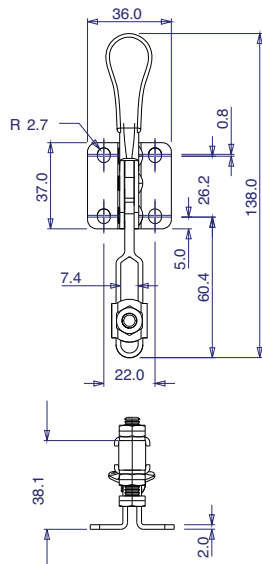
## ► Flat Base All Arm Types



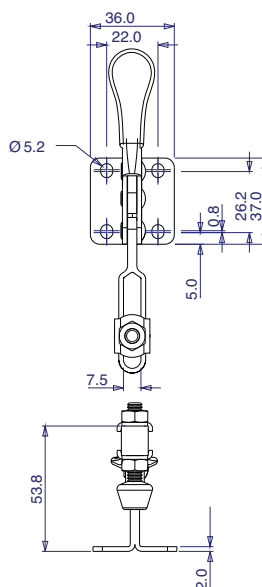
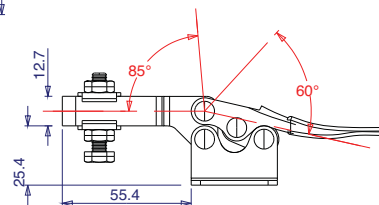
<b>Part No:</b>	<b>GH-201-B</b>
Holding Force:	90Kg
Arm Opens:	85°
Handle Opens:	60°
Weight:	0.13Kg
Spindle Supplied:	FC-14134
Flanged Washers Supplied:	FW-141



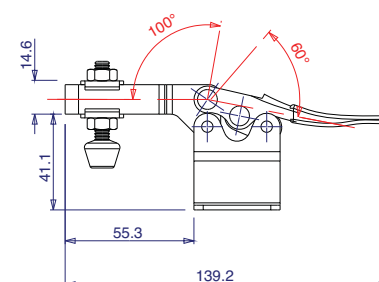
stainless



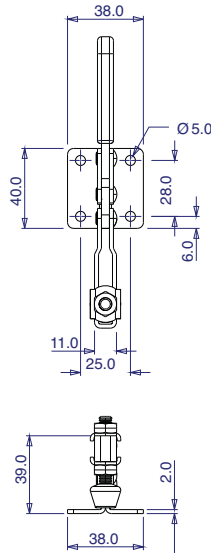
<b>Part No:</b>	<b>GH-201-BSS</b>
Holding Force:	90Kg
Arm Opens:	85°
Handle Opens:	60°
Weight:	0.13Kg
Spindle Supplied:	SA-14134-SS
Flanged Washers Supplied:	FW-141-SS



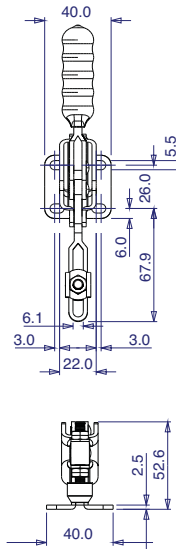
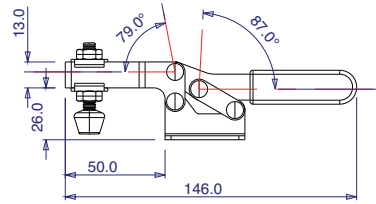
<b>Part No:</b>	<b>GH-201-BHB</b>
Holding Force:	90Kg
Arm Opens:	85°
Handle Opens:	60°
Weight:	0.146Kg
Spindle Supplied:	FC-14134
Flanged Washers Supplied:	FW-141



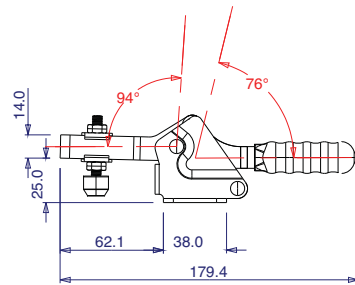
► Flat Base All Arm Types



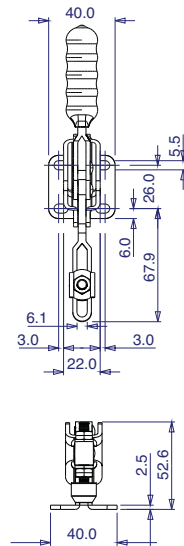
<b>Part No:</b>	<b>GH-201-C</b>
<b>Holding Force:</b>	100Kg
<b>Arm Opens:</b>	79°
<b>Handle Opens:</b>	87°
<b>Weight:</b>	0.14Kg
<b>Spindle Supplied:</b>	FC-14134
<b>Flanged Washers Supplied:</b>	FW-141



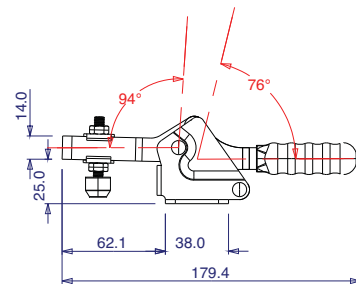
<b>Part No:</b>	<b>GH-21502-B</b>
<b>Holding Force:</b>	145Kg
<b>Arm Opens:</b>	94°
<b>Handle Opens:</b>	76°
<b>Weight:</b>	0.23Kg
<b>Spindle Supplied:</b>	SA-064010-BK+NC-06 Cap
<b>Flanged Washers Supplied:</b>	FW-140



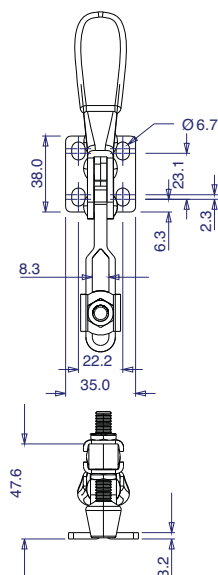
stainless



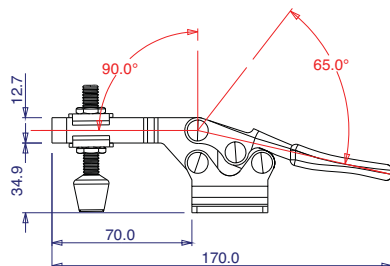
<b>Part No:</b>	<b>GH-21502-BSS</b>
<b>Holding Force:</b>	145Kg
<b>Arm Opens:</b>	94°
<b>Handle Opens:</b>	76°
<b>Weight:</b>	0.23Kg
<b>Spindle Supplied:</b>	SA-064010-SS+NC-06 Cap
<b>Flanged Washers Supplied:</b>	FW-140-SS



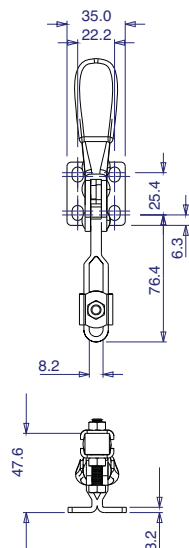
## ► Flat Base All Arm Types



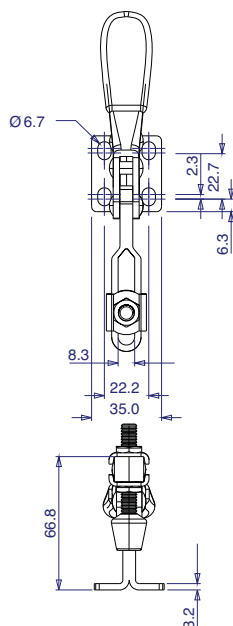
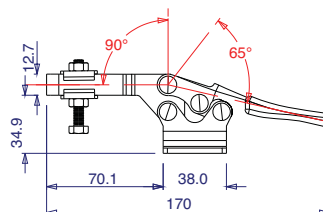
<b>Part No:</b>	<b>GH-225-D</b>
Holding Force:	227Kg
Arm Opens:	90°
Handle Opens:	65°
Weight:	0.27Kg
Spindle Supplied:	FC-56212
Flanged Washers Supplied:	FW-516



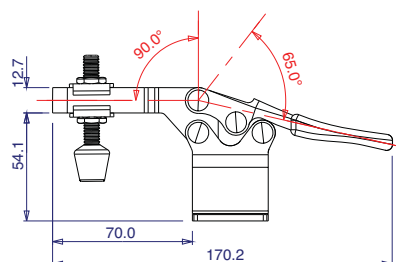
stainless



<b>Part No:</b>	<b>GH-225-DSS</b>
Holding Force:	227Kg
Arm Opens:	90°
Handle Opens:	65°
Weight:	0.27Kg
Spindle Supplied:	SA-56212-SS
Flanged Washers Supplied:	FW-516-SS

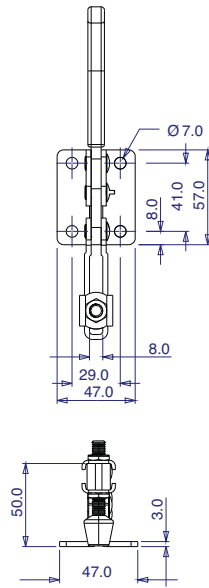


<b>Part No:</b>	<b>GH-225-DHB</b>
Holding Force:	227Kg
Arm Opens:	90°
Handle Opens:	65°
Weight:	0.286Kg
Spindle Supplied:	FC-56212
Flanged Washers Supplied:	FW-516

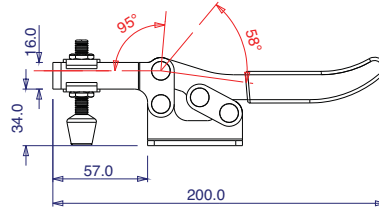




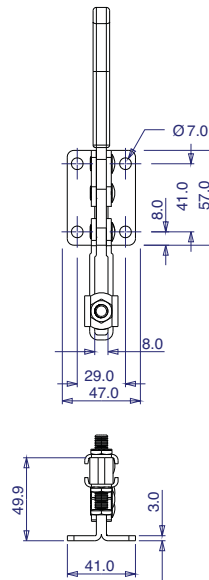
► Flat Base All Arm Types



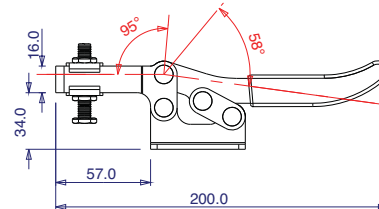
<b>Part No:</b>	<b>GH-203-F</b>
Holding Force:	227Kg
Arm Opens:	85°
Handle Opens:	58°
Weight:	0.34Kg
Spindle Supplied:	FC-56212
Flanged Washers Supplied:	FW-516



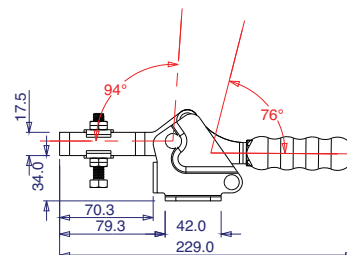
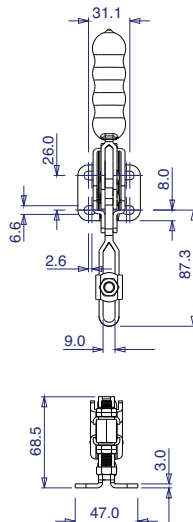
stainless



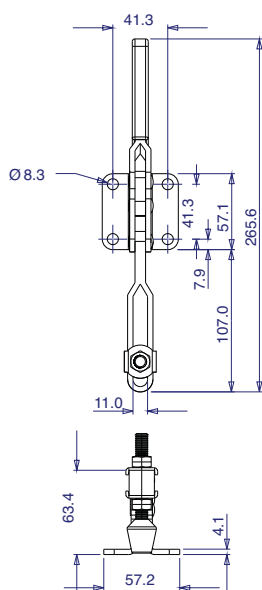
<b>Part No:</b>	<b>GH-203-FSS</b>
Holding Force:	227Kg
Arm Opens:	85°
Handle Opens:	58°
Weight:	0.34Kg
Spindle Supplied:	SA-56212-SS
Flanged Washers Supplied:	FW-516-SS



<b>Part No:</b>	<b>GH-22502-B</b>
Holding Force:	235Kg
Arm Opens:	94°
Handle Opens:	76°
Weight:	0.43Kg
Spindle Supplied:	SA-085012
Flanged Washers Supplied:	FW-516

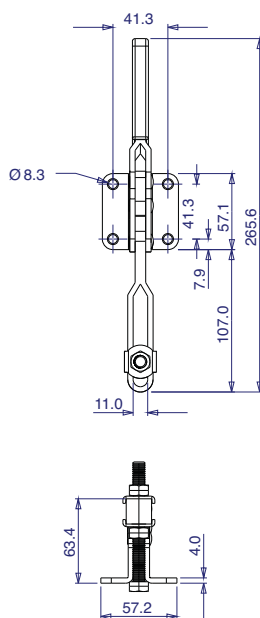


## ► Flat Base All Arm Types

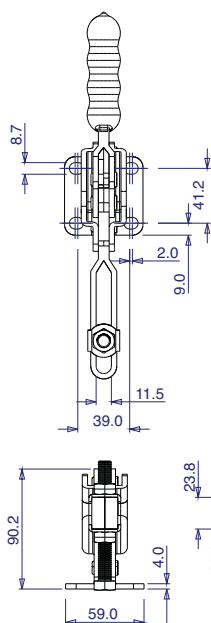


<b>Part No:</b>	<b>GH-20235</b>
Holding Force:	340Kg
Arm Opens:	85°
Handle Opens:	50°
Weight:	0.64Kg
Spindle Supplied:	FC-38312
Flanged Washers Supplied:	FW-380

stainless



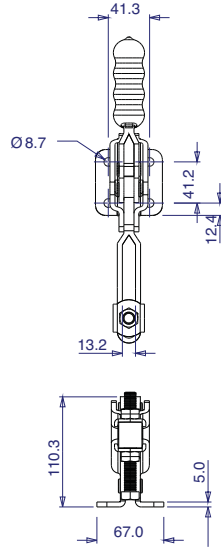
<b>Part No:</b>	<b>GH-20235-SS</b>
Holding Force:	340Kg
Arm Opens:	85°
Handle Opens:	50°
Weight:	0.64Kg
Spindle Supplied:	SA-38312-SS
Flanged Washers Supplied:	FW-380-SS



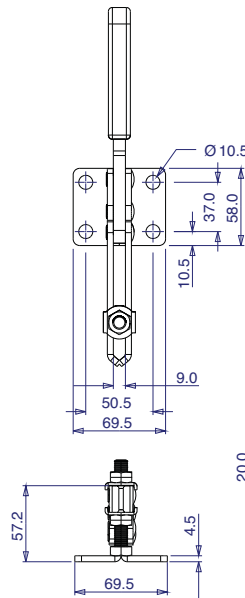
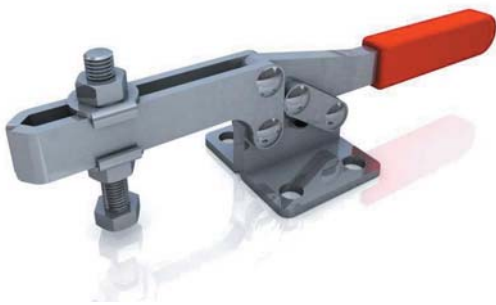
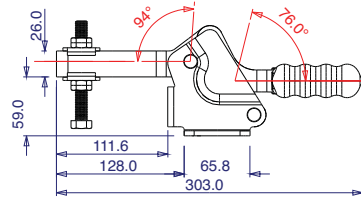
<b>Part No:</b>	<b>GH-23502-B</b>
Holding Force:	350Kg
Arm Opens:	94°
Handle Opens:	76°
Weight:	0.5Kg
Spindle Supplied:	SA-107515
Flanged Washers Supplied:	FW-380



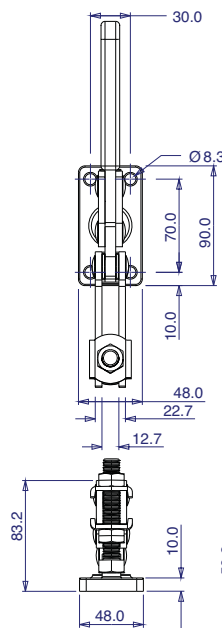
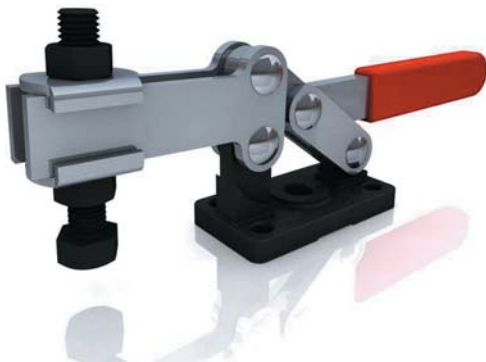
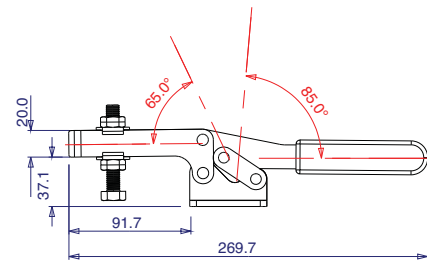
► Flat Base All Arm Types



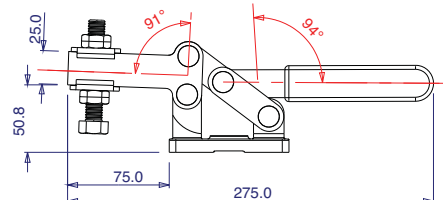
<b>Part No:</b>	<b>GH-24502-B</b>
Holding Force:	450Kg
Arm Opens:	94°
Handle Opens:	76°
Weight:	1.4Kg
Spindle Supplied:	SA-121017
Flanged Washers Supplied:	FW-120



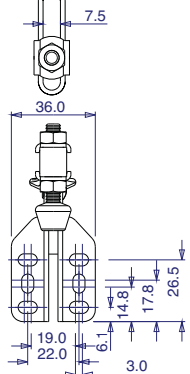
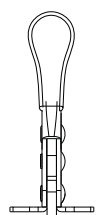
<b>Part No:</b>	<b>GH-21384</b>
Holding Force:	500Kg
Arm Opens:	65°
Handle Opens:	85°
Weight:	0.64Kg
Spindle Supplied:	SA-106515
Flanged Washers Supplied:	FW-120



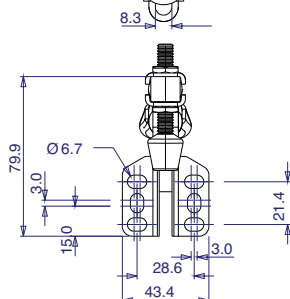
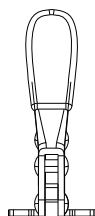
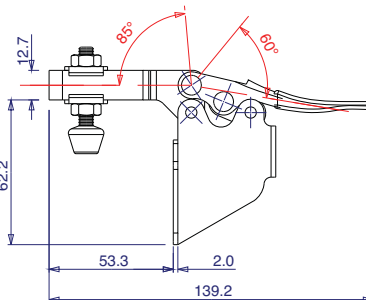
<b>Part No:</b>	<b>GH-204-G</b>
Holding Force:	660Kg
Arm Opens:	91°
Handle Opens:	94°
Weight:	1.22Kg
Spindle Supplied:	SA-12300
Flanged Washers Supplied:	FW-120



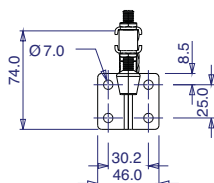
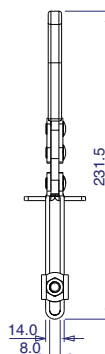
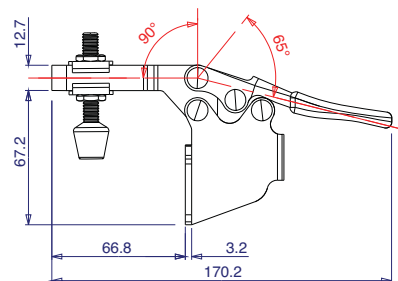
## ► Side Mounting All Arm Types



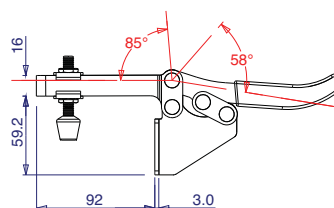
<b>Part No:</b>	<b>GH-201-BSM</b>
Holding Force:	90Kg
Arm Opens:	85°
Handle Opens:	60°
Weight:	0.163Kg
Spindle Supplied:	FC-14134
Flanged Washers Supplied:	FW-141



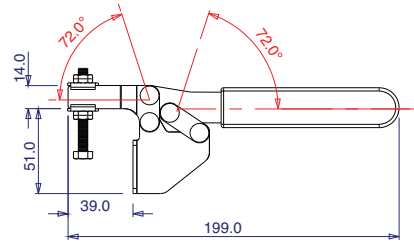
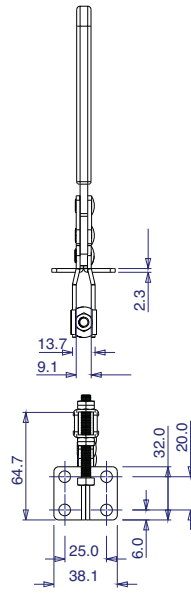
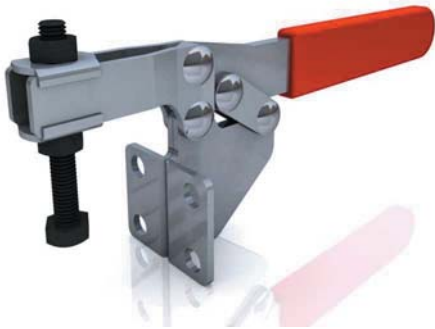
<b>Part No:</b>	<b>GH-225-DSM</b>
Holding Force:	227Kg
Arm Opens:	90°
Handle Opens:	65°
Weight:	0.315Kg
Spindle Supplied:	FC-56212
Flanged Washers Supplied:	FW-516



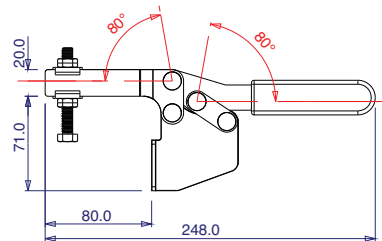
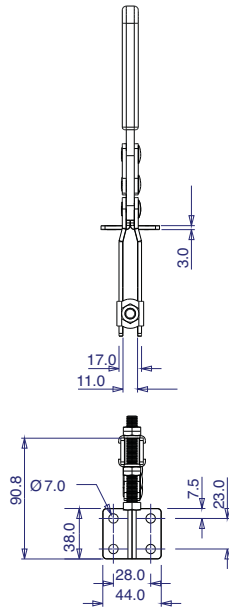
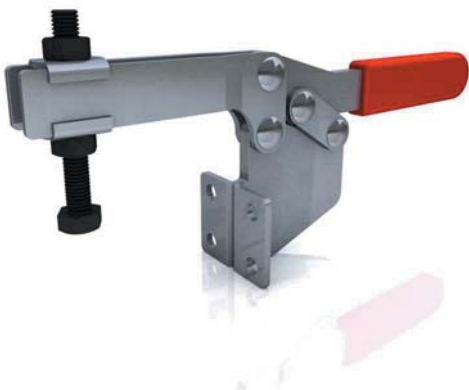
<b>Part No:</b>	<b>GH-202-FL</b>
Holding Force:	227Kg
Arm Opens:	85°
Handle Opens:	58°
Weight:	0.425Kg
Spindle Supplied:	FC-56212
Flanged Washers Supplied:	FW-516



## ► Side Mounting All Arm Types



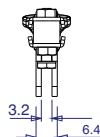
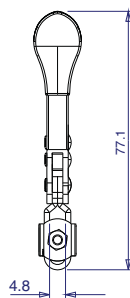
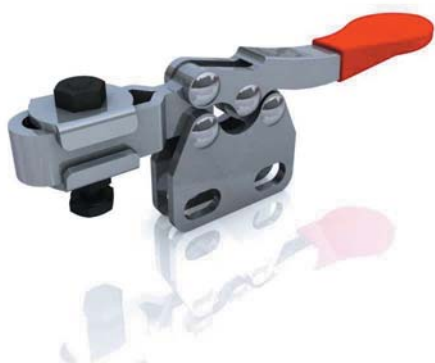
<b>Part No:</b>	<b>GH-21383</b>
Holding Force:	250Kg
Arm Opens:	72°
Handle Opens:	72°
Weight:	0.21Kg
Spindle Supplied:	SA-065010
Flanged Washers Supplied:	FW-140



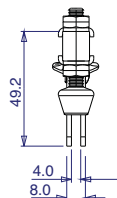
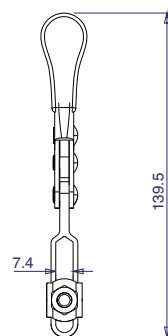
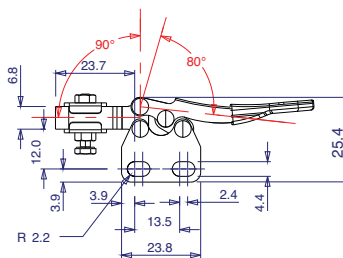
<b>Part No:</b>	<b>GH-25383</b>
Holding Force:	280Kg
Arm Opens:	80°
Handle Opens:	80°
Weight:	0.44Kg
Spindle Supplied:	SA-086512
Flanged Washers Supplied:	FW-516



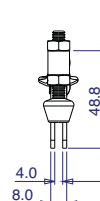
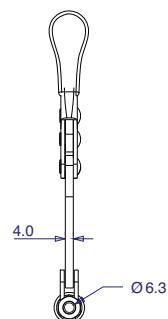
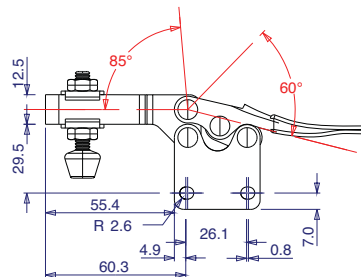
## ► Straight Base All Arm Types



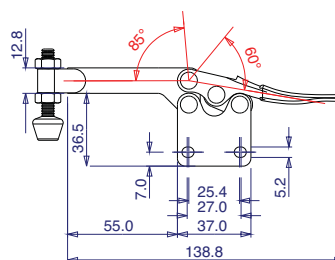
<b>Part No:</b>	<b>GH-201-I</b>
Holding Force:	38Kg
Arm Opens:	90°
Handle Opens:	80°
Weight:	0.05Kg
Spindle Supplied:	SA-08034
Flanged Washers Supplied:	FW-080



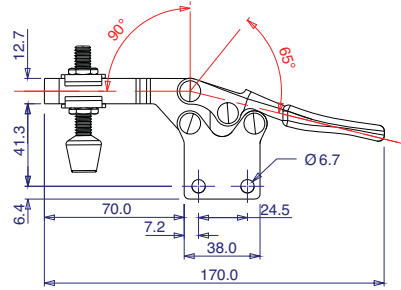
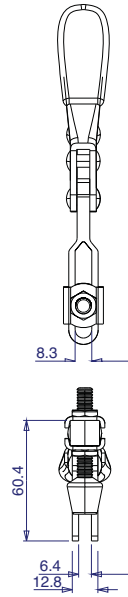
<b>Part No:</b>	<b>GH-201-BI</b>
Holding Force:	90Kg
Arm Opens:	85°
Handle Opens:	60°
Weight:	0.13Kg
Spindle Supplied:	FC-14134
Flanged Washers Supplied:	FW-141



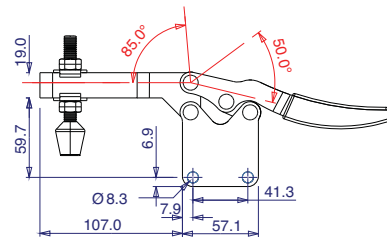
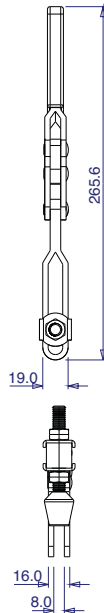
<b>Part No:</b>	<b>GH-201-BSI</b>
Holding Force:	90Kg
Arm Opens:	85°
Handle Opens:	60°
Weight:	0.13Kg
Spindle Supplied:	FC-14134
Bolt Retainer Supplied:	BR-516



## ► Straight Base All Arm Types



<b>Part No:</b>	<b>GH-225-DI</b>
Holding Force:	227Kg
Arm Opens:	90°
Handle Opens:	65°
Weight:	0.27Kg
Spindle Supplied:	FC-56212
Flanged Washers Supplied:	FW-516



<b>Part No:</b>	<b>GH-20236</b>
Holding Force:	340Kg
Arm Opens:	85°
Handle Opens:	50°
Weight:	0.64Kg
Spindle Supplied:	FC-38312
Flanged Washers Supplied:	FW-380

